

# KENNEDY PRESERVE

The Cypress  
4-6 BD | 3.5-4 BA | 3,339 SQ. FT.



ELEVATION C



ELEVATION A



ELEVATION B



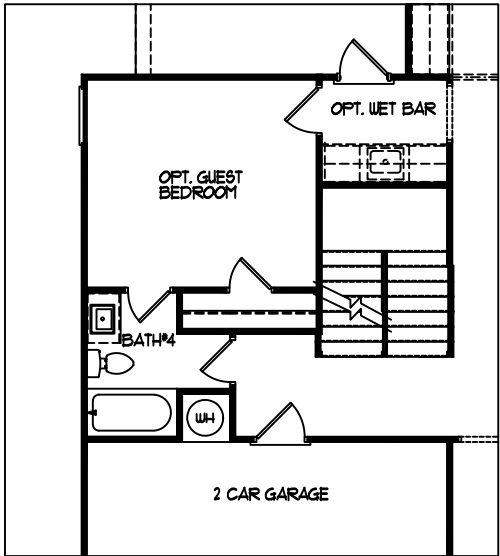
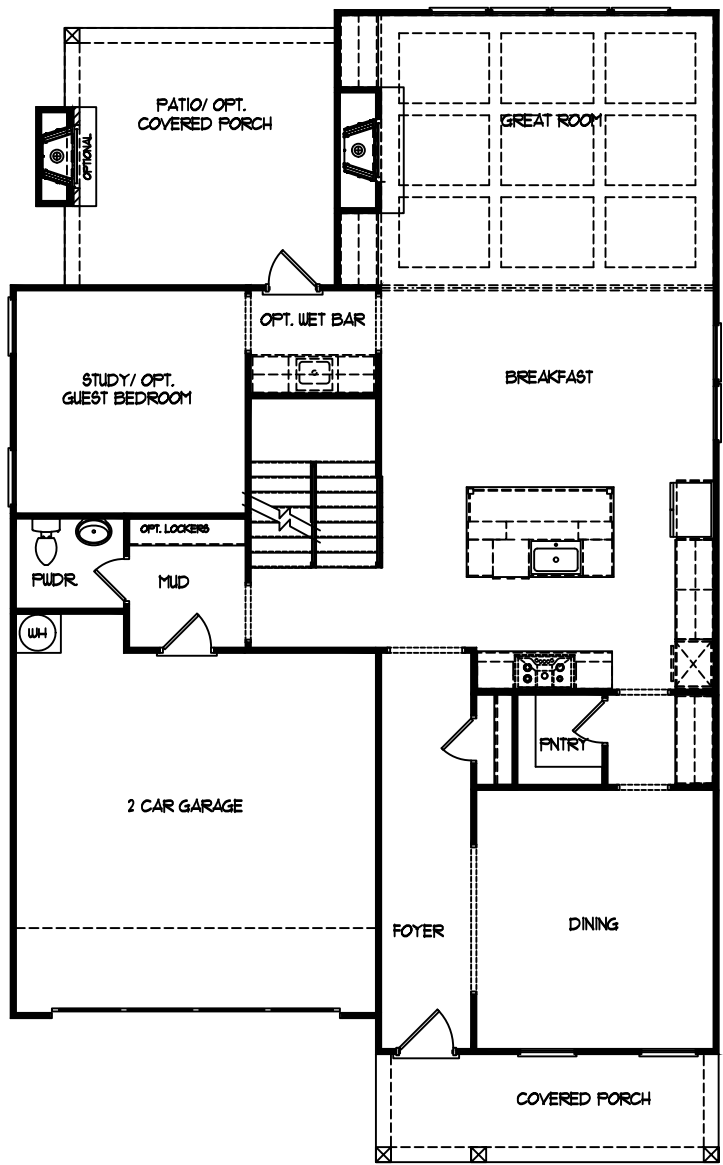
ELEVATION D



WALKER  
ANDERSON 

# KENNEDY PRESERVE

## The Cypress MAIN LEVEL



OPTIONAL  
GUEST BED & BATH #4

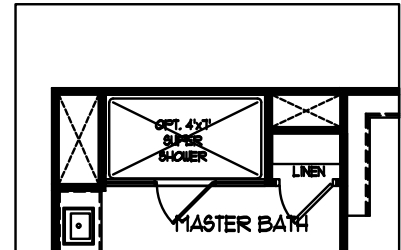


WALKER  
ANDERSON



# The Cypress

## UPPER LEVEL



The second floor plan includes a large central area labeled "OPT. BEDROOM#5". To the left of this area is a bedroom labeled "BEDROOM#4". To the right of "BEDROOM#4" is a bathroom labeled "BATH#2" which contains a bathtub, toilet, and sink. A dashed rectangle indicates a closet or storage area near the entrance to "BEDROOM#4". A staircase is located at the top left of the plan.

